

Level 2 Award for Forest School Assistants FSTC Modular Course Details for Norfolk course, starting June 2018

Please ensure you have read our '**Level 2 Course Information Guide**' (available on our website) in conjunction with this flier. The information Guide contains full details about the content, commitment and assessment methods of our level 2 Forest School training course.

Course Dates & Locations:

Course Component	Date	Number of Days	Location
Immersion	Wednesday 27 th June 2018	1	Holt Hall
Module 1	Thursday 28 th & Friday 29 th June 2018	2	Holt Hall
Module 2	Thursday 27 th & Friday 28 th September 2018	2	Holt Hall
Assisting at a FS	October – December 2018	3 sessions	At a Forest School site
Final Hand-in	16 th December 2018	n/a	n/a

Timings: 9am to 5pm each day

Venue – Holt Hall Environmental & Outdoor Learning Centre

Holt Hall is an outdoor centre owned by Norfolk County Council on the outskirts of Holt. We will be using a self-contained training room and an area of their beautiful woodland for the training modules. You can find out more about the venue here: www.holthall.org.uk

Modular Training - 'Top up'

The modular format of our training is designed to be flexible to meet learners needs, therefore it is possible for students who have recently gained a level 2 Forest School Qualification to 'top-up' their training to level 3. This means that in the future you can use the level 2 qualification towards a level 3 course should you wish to continue your Forest School training. **Please note that we no longer can offer a 'top up' to people who have previously completed the level 1 training due to recent changes to the units of the qualification.**

Prices

FSTC prices are fully inclusive of all course costs, including; qualification registration & certification, assessment marking & moderation, administration, course support resources & access to equipment, student website access, and tutorial support. There are no 'hidden extras' and we do not charge our students for late submission of work (unless the submission date has gone beyond what is required by the moderators).

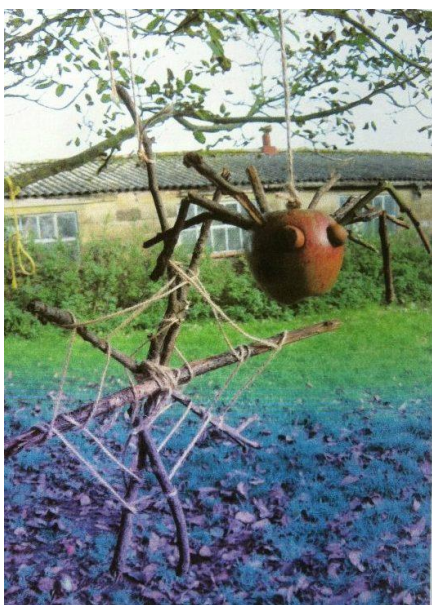
	Number of Training Days attended	Cost of course
Level 2 Full Course	5	£600



Value Added Features of our training course

We care about the quality of our training and the Forest School practice which ultimately results from it. There is a wide range of Forest School training available in the UK and we want to ensure that our course is right for the students that choose to undertake their training with us. Some of the additional benefits that our training offers are:

- **Modular Format** – making learning more manageable, and giving you the option to 'top up' your training to level 3 in the future should you wish to.
- **Nationally recognised Qualification** – we use the most up to date Forest School qualification units. These are the national standard and on the RQF.
- **Outdoor living experiences** – through the initial immersion day
- **Online Services** – Student password protected web pages & resources,
- **Ongoing Support** – 'Tutor on call' days for tutorial support
- **Free 1 year student membership** to the Forest School Association



Supporting a Forest School Programme

To complete the level 2 qualification students are required to support a minimum of 3 consecutive sessions within a Forest School programme being run by a level 3 Leader. It is usual that students will arrange this themselves, however if participants do not yet have contact with a Forest School, our tutors may be able to signpost students to existing Forest Schools if needed.

How to Book

Please complete and submit the online booking form within our course date web pages.

Please ensure you have read our Terms and Conditions before applying, found on our website www.forestschooltraining.co.uk .