

## Level 2 Award in Forest School Programme Support FSTC Modular Course Details for Norfolk course, starting June 2017

Please ensure you have read our '**Level 2 Course Information Guide**' (available on our website) in conjunction with this flier. The information Guide contains full details about the content, commitment and assessment methods of our level 2 Forest School training course.

### Course Dates & Locations:

Course Component	Date	Number of Days	Location
Immersion	Weds 28 <sup>th</sup> June 2017	1	Holt Hall
Module 1	Thurs 29 <sup>th</sup> & Fri 30 <sup>th</sup> June 2017	2	Holt Hall
Module 2	Thurs 28 <sup>th</sup> & Fri 29 <sup>th</sup> September 2017	2	Holt Hall
Assisting at a FS	October - December 2017 – TBA by student	3 sessions	Forest School site
Final Hand-in	30 <sup>th</sup> January 2018	n/a	n/a

**Timings:** 9am to 5pm each day

### Venue – Holt Hall Environmental & Outdoor Learning Centre

Holt Hall is owned by Norfolk County Council and is open to residential and day educational groups, as well as hosting events. We will have access to their 'Stables', a self-contained training room and woodland for the training modules. You can find out more about the venue here: <http://www.holthall.org.uk/>

### Students wishing to 'Top up'

The modular format of training is designed to be flexible to meet learners needs, therefore it is possible for students who have recently gained a level 1 Forest School Qualification to 'top-up' their training to level 2. The level 1 qualification must have been gained within 2 years before the start date of the level 2 course and needs to have been with FSTC. All students are encouraged to attend the immersion day at the start of the course, but then people who have done level 1 can omit Module 1 and go straight into module 2.

### Prices

FSTC prices are fully inclusive of all course costs, including; qualification registration & certification, assessment marking & moderation, administration, course support resources & access to equipment, student website access, and tutorial support. There are no 'hidden extras' and we do not charge our students for late submission of work (unless the submission date has gone beyond what is required by the moderators).

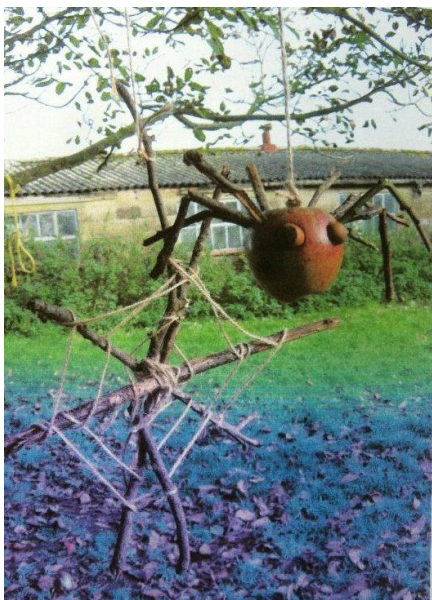
	Number of Training Days attended	Cost of course
Level 2 Full Course	5	£600
Level 1 to 2 'Top Up'	3	£450



### **Value Added Features of our training course**

We care about the quality of our training and the Forest School practice which ultimately results from it. There is a wide range of Forest School training available in the UK and we want to ensure that our course is right for the students that choose to undertake their training with us. Some of the additional benefits that our training offers are:

- **Modular Format** – making learning more manageable, and giving you the option to 'top up' your training to level 3 in the future should you wish to.
- **Nationally recognised Qualification** – we use the most up to date Forest School qualification units. These are the national standard and on the QCF.
- **Outdoor living experiences** – through the initial immersion day
- **Online Services** – Student password protected web pages & resources,
- **Ongoing Support** – 'Tutor on call' days for tutorial support
- **Free 1 year student membership** to the Forest School Association



### **Supporting a Forest School Programme**

To complete the level 2 qualification students are required to support a minimum of 3 consecutive sessions within a Forest School programme being run by a level 3 Leader. It is usual that students will arrange this themselves, however if participants do not yet have contact with a Forest School, our tutors may be able to signpost students to existing Forest Schools if needed.

### **How to Book**

Please complete and submit the online booking form within our course date web pages.

Please ensure you have read our Terms and Conditions before applying, found on our website

[www.forestschooltraining.co.uk](http://www.forestschooltraining.co.uk) .